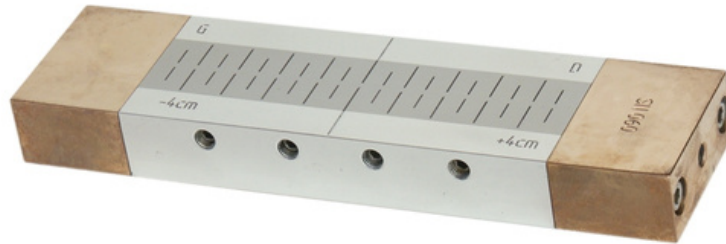




REFERENCE BLOCK TYPE 2



Product characteristics

- The reference body 2 is a self-retaining unit that does not require external magnetisation.
- It contains two steel blocks and two permanent magnets. It must be calibrated so that the + 4 mark means + 100 A/m and the - 4 mark means - 100 A/m.
- The indicator lengths are a measure of suitability.
- The indications start at the ends and decrease towards the middle. The better suitability is indicated by longer displays.
- The sum of the lengths of the left and right displays is evaluated.
- Delivery incl. Certificate

Item number: 1604

Technical changes reserved!