



# RILUMINATI 815 & 816

## EARLY DETECTION



### FIND CRACKS AS THEY APPEAR!

#### Produkteigenschaften:

- ✓ Reliable, early and passive method for the detection of fatigue cracks
- ✓ Long-term monitoring in critical areas
- ✓ No information about crack location required
- ✓ Possibility for automated crack detection (remote monitoring) during running processes
- ✓ Excellent adhesion to steel surfaces due to the combination of elasticity and strength
- ✓ Testing under UV light
- ✓ Suitable for industrial application on steel surfaces
- ✓ High UV resistance
- ✓ Color strength and gloss are preserved for a long time
- ✓ Application temperature - 10 to + 80 °C

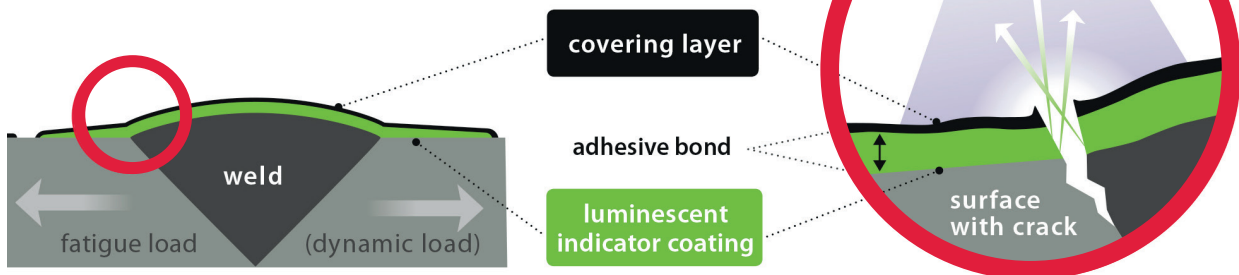
Two-component special coating based on an acrylic resin (pigmented):

**RILUMINATI 815**  
Indicator layer, fluorescent



**RILUMINATI 816**  
Top coat, black

Both layers of the system tear open when the steel is cracked and the crack edges of the indicator layer are exposed. At irradiation of the area with UV light (365 nm) the crack the crack glows green-yellow.



#### Your benefits:

- ✓ Low effort for the user due to one-time coating and large-area testing
- ✓ Uncomplicated application without special knowledge (visual inspection)
- ✓ Remote monitoring possible, cracks can be detected with naked eye or surveillance camera
- ✓ Monitoring possible during running process
- ✓ Even areas that are difficult to access can be reached

**RILUMINATI** is an innovative method for early detection of fatigue cracks.

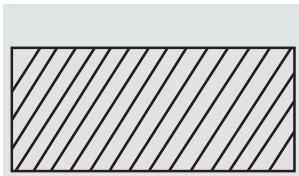


# RILUMINATI 815 & 816 EARLY DETECTION

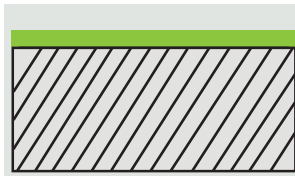


## WORKING OPERATIONS

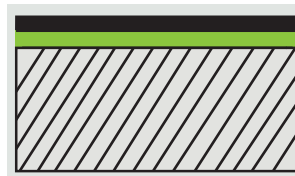
Ambient temperature	Drying time RILUMINATI 815	Drying time RILUMINATI 816
- 10 °C	300 min	240 min
0 °C	240 min	180 min
+ 10 °C	180 min	120 min
> + 20 °C	120 min	60 min



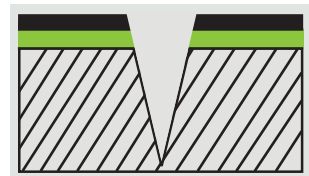
**1. Choose position**  
Location or area to be monitored



**2. Indicator layer**  
Apply RILUMINATI 815 evenly and thinly



**3. Top coat**  
Apply RILUMINATI 816 evenly and thinly

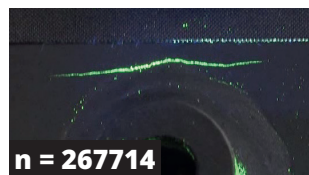
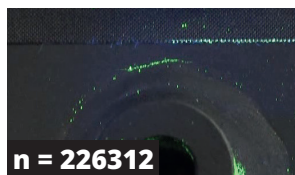
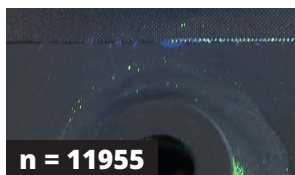
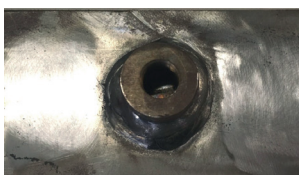


**4. Verify**  
When the cracks are torn open, the indicator layer becomes visible under UV light

## BUTT WELD TESTING



## BUTT WELDING



**RILUMINATI IS A LICENCE PRODUCT OF:**

