



MR[®] Hand Magnets (AC)

230V / 42V

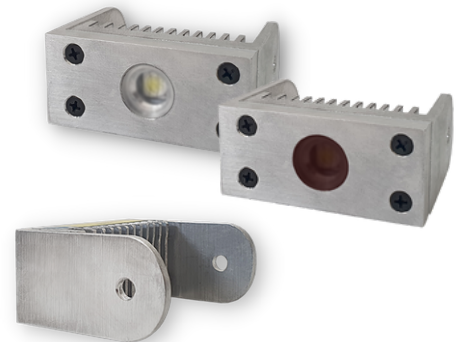


MR[®] 50 | MR[®] 50V42 | MR[®] 56 | MR[®] 56V42



MR[®] 90 | MR[®] 90 W
UV-YokeR

Mountable on MR[®] 50



**Innovative switch
sealing**



Technical changes reserved

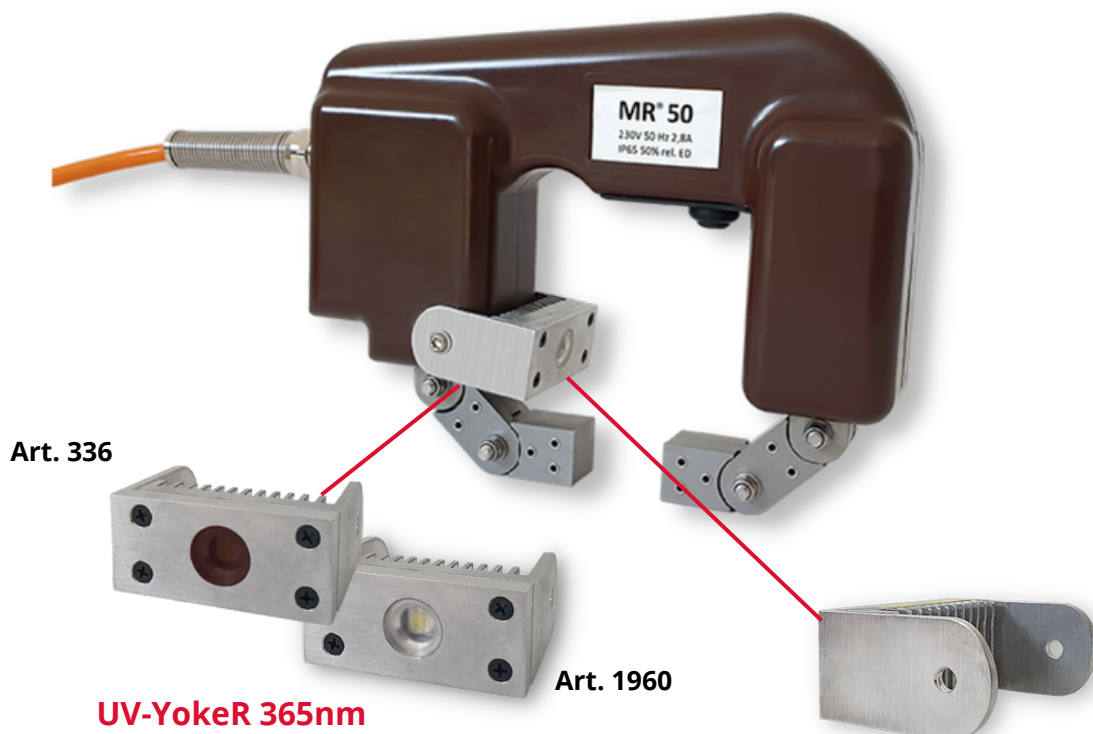


MR[®] Hand Magnets (AC)

230V / 42V



MR[®] 50 | MR[®] 50V42 | MR[®] 56 | MR[®] 56V42



Product characteristics

- Own production - Made in Germany
- Very good price/performance ratio
- Powerful
- Possibility to attach MR[®] 90 UV-YokeR & MR[®] 90 W white light-YokeR
- Impact-resistant, robust housing
- No loss of power due to optimised fit of poles
- Poles and switches protected against penetration of test media
- Innovative switch sealing
- Strain relief minimises the risk of cable breakage

Technical changes reserved

MR[®] Hand Magnets (AC)

230V / 42V



MR[®] 50 | MR[®] 50V42 | MR[®] 56 | MR[®] 56V42

Technical Data

	MR[®] 50 (230V)	MR[®] 50 (42V)	MR[®] 56 (230V)	MR[®] 56V42 (42V)
Art.-Nr. Magnet:	1173	1159	828	711
Art.-Nr. Transformer:	-	-	-	810
Voltage / Frequency:	230V AC / 50-60 Hz	42V	230V AC / 50-60 Hz	42V AC / 50-60 Hz
Electricity:	2.8 Ampere	3.6 Ampere	3.8 Ampere	7.9 Ampere
Pole spacing movable: straight:	95-190 mm 140 mm	95-190 mm 140mm	110-220 mm 165 mm	110-220 mm 165 mm
Tear-off force:	ca. 5,6 kg	5,4 kg	> 15 kg	> 15 kg
Field strength with movable poles (measured on steel plate C45 (Art. G53 L):	Pole distance 190 mm: 32-32,5 A/cm Pole distance 140 mm: 37-37,5 A/cm Pole distance 95 mm: 57-57,5 A/cm	Pole distance 190 mm: 20 A/cm Pole distance 140 mm: 24 A/cm Pole distance 95 mm: 33 A/cm	Pole distance 220 mm: 44 A/cm Pole distance 165 mm: 50 A/cm Pole distance 110 mm: 75 A/cm	Pole distance 220 mm: 34 A/cm Pole distance 165 mm: 40 A/cm Pole distance 110 mm: 59 A/cm
Field strength with straight poles (measured on steel plate C45 (Art. G53 L)	Pole distance 140 mm: 42,5-43 A/cm	Pole distance 140 mm: 28 A/cm	Pole distance 165 mm: 60 A/cm	Pole distance 165 mm: 45 A/cm

Technical changes reserved

MR[®] Hand Magnets (AC)

230V / 42V



MR[®] 50 | MR[®] 50V42 | MR[®] 56 | MR[®] 56V42

Technical Data

	MR[®] 50 (230V)	MR[®] 50 (42V)	MR[®] 56 (230V)	MR[®] 56V42 (42V)
Power type:	AC	AC	AC	AC
Housing dimensions:	L215xD50xH145 mm	L215xD50xH145 mm	L235xD45xH140 mm	L235xD45xH140 mm
Weight:	incl. movable poles: 3.3 kg incl. straight poles: 3.1 kg	incl. movable poles: 3.3 kg incl. straight poles: 3.1 kg	incl. movable poles: 4.0 kg incl. straight poles: 3.7 kg	incl. movable poles: 4.0 kg incl. straight poles: 3.7 kg
Supply line:	3 m safety cable with safety plug	3 m safety cable with safety plug	5 m safety cable with safety plug	5 m safety cable with safety plug
Norms fulfilled:	EN 9934-3 ASTM E709	EN 9934-3 ASTM E709	EN 9934-3 ASTM E709	EN 9934-3 ASTM E709
Scope of delivery:	MR [®] 50 manual solenoid -straight + movable attachment poles -Instruction manual -Protocol BGV A3	MR [®] 50 manual solenoid -straight + movable attachment poles -Instruction manual -Protocol BGV A3	MR [®] 56 manual solenoid -straight attachment poles -Instruction manual -Protocol BGV A3	MR [®] 56V42 manual solenoid -straight attachment poles -operating instructions - protocol BGV A3

**Note: Hand magnets, MR[®] 50V110
MR[®] 51V110
MR[®] 56V110 are available on request!**

Technical changes reserved



MR[®] Hand Magnets (AC)

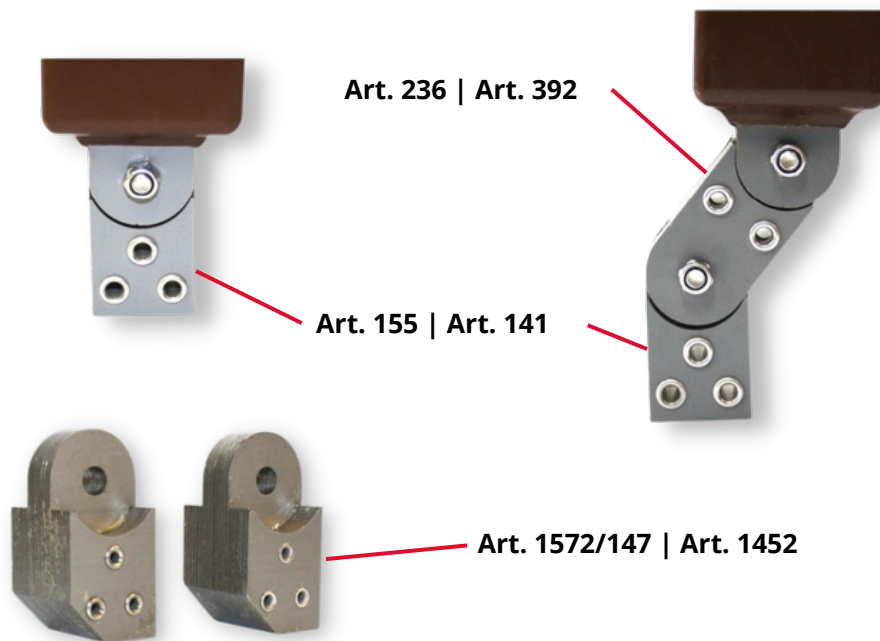
230V / 42V



MR[®] 50 | MR[®] 50V42 | MR[®] 56 | MR[®] 56V42

Straight attachment poles

Movable attachment poles



The MR[®] 50 / MR[®] 50V42 AC manual solenoid is supplied as standard with movable front poles. If the joint piece (Art. 236) is removed, straight poles are obtained.

The MR[®] 56 / MR[®] 56V42 AC manual solenoid is supplied with straight poles as standard. The joint piece (art. 392), for conversion to movable poles, is optionally available.

For tests on special designs (e.g. pipes, fillet welds etc.), the 45° poles (art. 1572 / 147 -1452) can be mounted on the joint piece (art. 236 / 392) or directly on the hand magnet.

Technical changes reserved



MR[®] Hand Magnets (AC)

230V / 42V



MR[®] 50 | MR[®] 50V42 | MR[®] 56 | MR[®] 56V42

Spare parts / accessories

MR[®] 50 Hand Magnet (AC) 230 V

MR[®] 50V42 Hand Magnet (AC) 42V

Art.Nr.	Description
236	Joint piece for movable attachment poles (1 set = 2 pieces)
155	Contact poles (1 set = 2 pieces)
1572 / 147	Pole 45° (1 set = 2 pieces)
336	MR [®] 90 UV yoker UV module can be mounted on MR [®] 50, power supply via integrated electronics Risk class 2 according to EM6, UVA: 10 cm distance approx. 25 W/m ² , 5 cm distance approx. 70 W/m ²
1960	MR [®] 90 W White light Yoker UV module can be mounted on MR [®] 50, power supply via integrated electronics White light: 10 cm distance approx. > 3,000 lux 5 cm distance approx. > 5,000 lux

* measured on steel plate C45 (Art. 1227)

Technical changes reserved



MR[®] Hand Magnets (AC)

230V / 42V




MR[®] 50 | MR[®] 50V42 | MR[®] 56 | MR[®] 56V42

Spare parts / accessories

MR[®] 56 Hand Magnet (AC) 230 V

MR[®] 56V42 Hand Magnet (AC) 42V

Art.Nr.	Description
392	Joint piece for movable attachment poles (1 set = 2 pieces)
141	Contact poles (1 set = 2 pieces)
1452	Pole 45° (1 set = 2 pieces)
810 	Safety transformer 42~ V IP 44, sec. 600 VA, 14.3 A, 50/60 Hz, 1.8 m safety cable with safety plug For art. 1559 & 711

Technical changes reserved